



April 24, 2013

File No. 0035 007 00

**Morrison Hershfield**  
Attn: Mr. Ron Bruce  
25 Scurfield Blvd, Unit 1  
Winnipeg, MB R3Y 1G4

**RE Pavement Structure Investigation Report for  
2013 Regional and Local Street Renewals – Portage Ave Package**

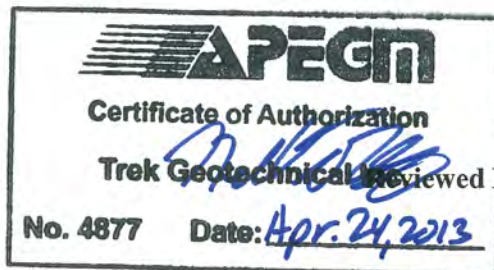
This letter summarizes the results of the supplementary pavement structure investigation completed April 22, 2013 for the proposed 2013 City of Winnipeg Regional and Local Street Renewals (PW File #: 13-C-03) on Portage Avenue between Greenwood Place and Sherburn Avenue. The supplemental investigation was performed to determine the concrete thickness in selected locations as the thickness was not confirmed in the previous pavement structure investigation performed March 11 to 14, 2013. A total of six (6) test holes were drilled. The locations of the original test hole locations as well as the supplementary test hole locations are shown on the attached figure (Figure 01). Supplementary test holes are noted as “B” to the original test holes in the vicinity of the core location.

Diamond Concrete Cutting and Coring Ltd. cored the pavement structure (asphalt or concrete) using a portable coring drill press equipped with a hollow 165 mm diameter diamond core drill bit. Core samples were retrieved and taken to TREK’s materials testing laboratory where the thickness was logged and photographs were taken. The attached table includes the test hole locations and pavement thicknesses. Core photographs are also attached.

If you have any questions regarding the findings presented, please contact the undersigned at your earliest convenience.

Kind Regards,

TREK Geotechnical  
Per:



**Stephen Renner, C.E.T.**  
Geotechnical Technologist

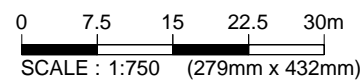
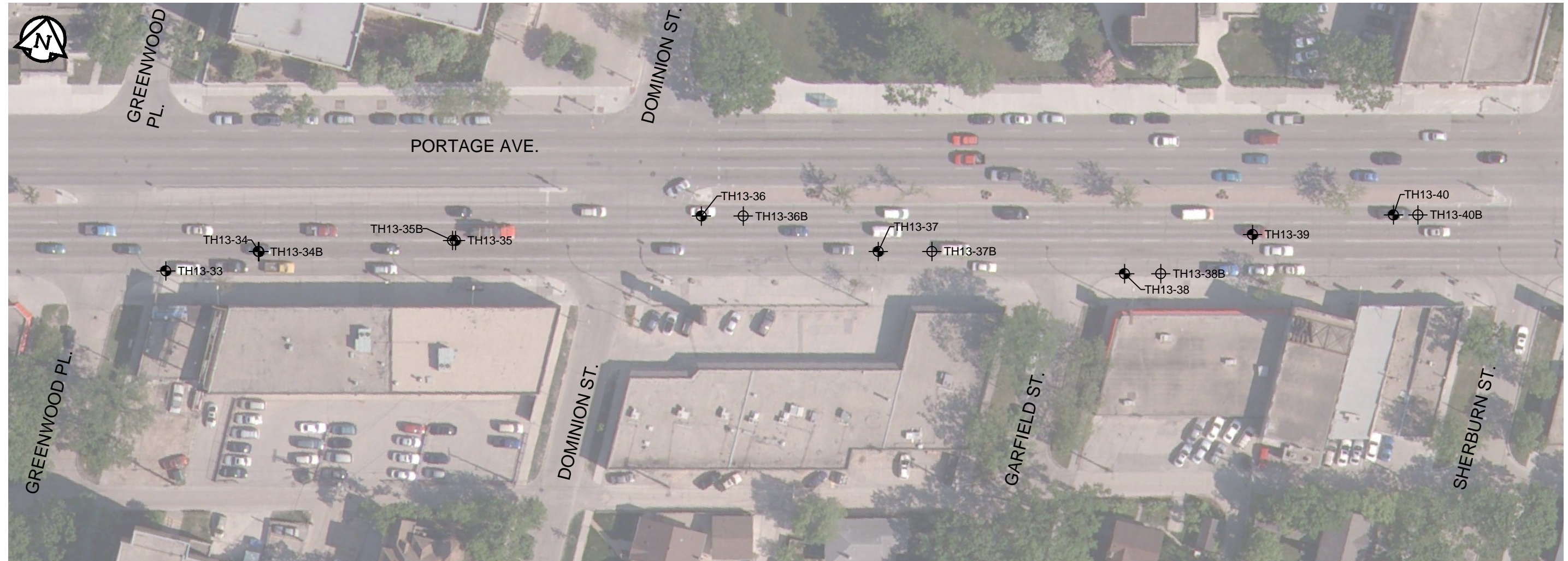
**Nelson Ferreira, M.Sc., P.Eng.**  
Geotechnical Engineer, Principal

Attach

Tabloid (279mm x 432mm)

PLOT: 23/04/2013 2:20:37 PM

FILE NAME: 0035 007 00 RB.dwg



**LEGEND :**

- ⊙ TEST HOLE (TREK, MARCH 11-14, 2013)
- ⊕ TEST HOLE (TREK, APRIL 22, 2013)

**NOTES :**

1. TEST HOLE LOCATIONS SHOWN ARE BASED ON MEASURED DISTANCES FROM THE NEAREST CURB AND MONUMENT (I.E. LIGHT POST, FIRE HYDRANT, CATCH BASIN, ETC.)

**Figure 01**

Test Hole Location Plan

Portage Avenue from Greenwood Pl. to Sherburn St.

**2013 City of Winnipeg Regional and Local Street Renewals  
PW File #: 13-C-03  
Pavement Structure Investigation**

Test Hole No.	Test Hole Location (Street Name)	Pavement Surface		Pavement Structure Material	
		Type	Thickness (mm)	Type	Thickness (mm)
TH13-34B	5.8m E of LP# 2-048-636, 4.3m N of curb in 2nd lane	Asphalt	89	Concrete	197
TH13-35B	3.6m W of 2nd LP of Greenwood Pl. and Portage Ave., 4.7m S of median in 3rd lane	Asphalt	127	Concrete	140
TH13-36B	17.1m E of LP# 2-048-638, 1.9m S of median in median lane	Asphalt	108	Concrete	241
TH13-37B	11.2m E of LP# 2-048-646, 4.6m N of curb in 2nd lane	Asphalt	114	Concrete	178
TH13-38B	5.2m E of LP# 2-048-627, 1m N of curb in curb lane	Asphalt	70	Concrete	260
TH13-40B	10.7m E of 2nd LP of Garfield St. and Portage Ave., 1.3m S of median in median lane	Asphalt	178	Concrete	191



Photo 41: Asphalt and Concrete Core Sample from Test Hole TH13-34B



Photo 42: Asphalt Core Sample from Test Hole TH13-35B



Photo 43: Asphalt and Concrete Core Sample from Test Hole TH13-36B



Photo 44: Asphalt and Concrete Core Sample from Test Hole TH13-37B



Photo 45: Asphalt and Concrete Core Sample from Test Hole TH13-38B



Photo 46: Asphalt and Concrete Core Sample from Test Hole TH13-40B